

# Queensland Eye Institute Foundation Corporate Function Venue

140 Melbourne Street, South Brisbane, QLD



**QUEENSLAND EYE INSTITUTE  
FOUNDATION**

Formerly the Prevent Blindness Foundation

# Corporate Function Venue

Queensland Eye Institute Foundation (QEIF) is a major not-for-profit research, academic and clinical care facility, with a commitment to preventing blindness and preserving sight.

In addition to these core services, QEIF's new premises boast purpose built spaces and a fresh modern interior, with a number of areas suitable for medical seminars, conferences, meetings or boutique events.

A unique alternative, Queensland Eye Institute Foundation offers light, well-priced room options with additional services for both conferences and smaller events.



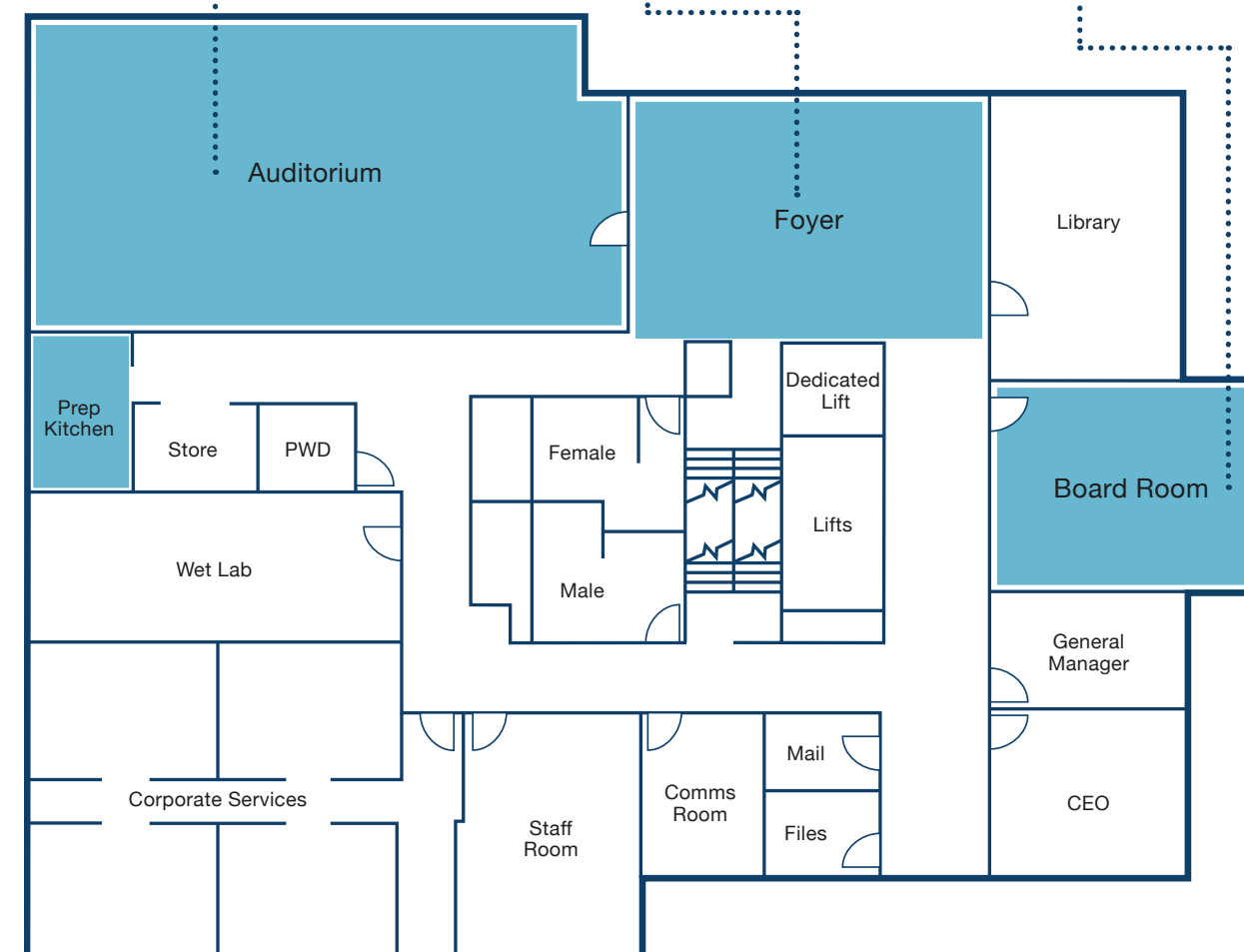
Auditorium



Foyer



Boardroom





# Rooms & Spaces

## Auditorium

Capacity: 100 people

The auditorium is ideal for medical seminars, workshops and meetings. An adaptable space, it has adjustable walls that allow the room to be segmented into 3 separate areas. Located on the 2nd level it is serviced by a nearby catering kitchen, with a larger kitchen also available on the same level.

- SIZE

128m<sup>2</sup> (approx.)
- COST

Half day \$400  
Full day \$600  
*(room only)*
- FEATURES

- Adjustable Walls
  - Projector
  - Screen
  - Lectern + Microphone
  - Video conferencing facilities (recording features available)



## Foyer

Capacity: 150 people

An open plan area adjacent to the auditorium with access also to the board room, this space is ideal for stand up cocktail style gatherings, lunch or morning/afternoon tea service.

- SIZE

50m<sup>2</sup> (approx.)
- COST

\$300 half day  
\$400 full day  
*(room only)*



## Des Hancock Boardroom

Capacity: 12 people

This room includes a large boardroom table with seating for twelve and conference call facilities. Suitable for smaller meetings, the room has ample natural light and views of the South Brisbane precinct.

- SIZE

40m<sup>2</sup> (approx.)
- COST

\$200 half day  
\$300 full day  
*(room only)*
- FEATURES

- Projector
  - Screen
  - Natural lighting
  - Conference call device



# Inclusions & Options

## Room Inclusions

All room bookings include:

- Registration table and corporate signage
- 2 secure undercover parking spots
- Complimentary Wi-Fi
- Iced water and mints
- Notepads and pens
- Flip chart or whiteboard and markers
- Tea and coffee

Optional extras:

- IT assistance (\$30/hour)
- QEI staff – general assistance (\$30/hour)
- On site parking (\$10/day/vehicle)



## Catering Options

Queensland Eye Institute Foundation can arrange external catering services to provide quality food packages for function guests including:

### Full-Day Delegate Package | \$50 - \$60pp

- Refreshments
- Morning Tea
- Lunch
- Afternoon Tea

### Half-Day Delegate Package | \$30 - \$40pp

- Refreshments
- Morning Tea OR Afternoon Tea
- Lunch

Special dietary requirements can be catered for. Please advise at the time of booking.



## Accommodation Options

Within close proximity to both South Bank and the Brisbane CBD, a multitude of accommodation options to suit varying budgets are available. Accommodation contacts can be supplied on request.



Queensland Eye Institute Foundation is centrally located between the accommodation, dining and retail precinct of South Brisbane and lively cultural and entertainment hub of West End.



## Location

Positioned within walking distance of the riverside South Bank precinct, it is convenient for both visitors and delegates.

Close to a variety of public transport options, QEI offers a central city side location, just 12 minutes walk from the CBD.

The Cultural Centre Bus way is only 7 minutes walk and the South Bank train station is available on nearby Grey Street, with a direct Air train service to both Brisbane International and domestic airports.

In addition to its close proximity to multiple hotels, Queensland Eye Institute Foundation is only a short walk from the Brisbane Convention Centre, The Queensland Museum, the Queensland Performing Arts Complex and the Gallery of Modern Art.

## Accessibility

Queensland Eye Institute Foundation is committed to providing equitable access for all visitors and delegates to the premises.

The building is wheelchair accessible and has unisex toilets on the same level as the meeting and conference rooms.

Designated access car park bays are available at the side of the building with direct ramp access to the main foyer and lift banks of the ground floor.

All areas of the building can be accessed by ramps or lifts and each lift is fitted with an emergency button and telephone.

Limited secure parking is available for function guests.

Should you have any special requirements please advise our Event Planning Manager at the time of enquiry or booking.

## Contact Us

For further information or to arrange a tour of the venue spaces at Queensland Eye Institute Foundation please contact:

### Events Coordinator

140 Melbourne Street, South Brisbane,  
Queensland Australia 4101  
T: 07 3239 5050  
E: [events@qei.org.au](mailto:events@qei.org.au)



**QUEENSLAND EYE INSTITUTE  
FOUNDATION**

Formerly the Prevent Blindness Foundation