

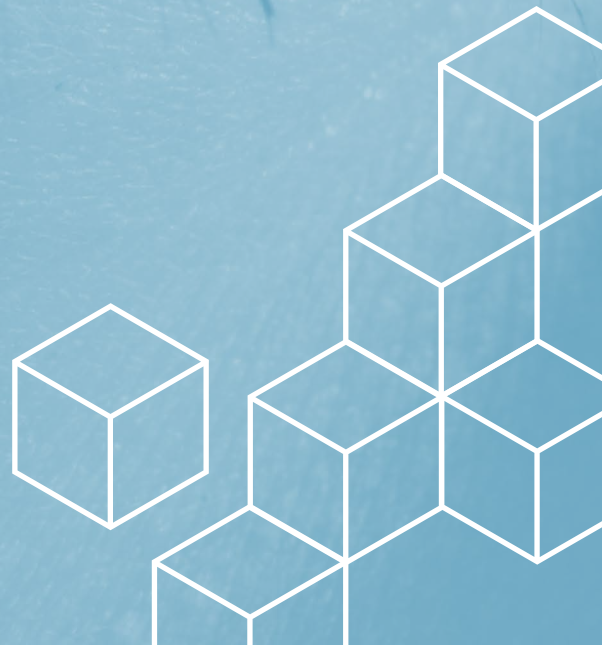


QUEENSLAND
eye
INSTITUTE
FOUNDATION

Year in Review 2022

QEI Foundation.

Delivering first class eye care
underpinned by scientific
research and education.



Contents

Acknowledgement to Country & Commitment to Sustainability	03
Our Purpose	04
Report by Chairman and Executive Director	05
Impacts & Outcomes	06
Collaborations	09
Sustainable Funding	10
Financial Snapshot	11
Why Research Matters	13
Board of Directors	14
Research Advisory Committee	16
Our 2022 Team	17
Support QEIF	18

Acknowledgement to Country & Commitment to Sustainability

Acknowledgement to Country

We acknowledge the Turrbal and Yugara peoples as the traditional owners of the lands where the Queensland Eye Institute Foundation now stands. We pay respect to their Elders, past, current and emerging. We recognise these lands have always been places of teaching, research, learning and healing.

Commitment to Sustainability

Last year QEIF adopted the United Nation's Sustainability Development Goals (SDG). Since then, we've reviewed our operations and processes to identify opportunities for reducing our environmental impact by reducing waste and recycling where we can.



In 2022 the QEI Clinic shifted to electronic correspondence while maintaining strict privacy safeguards, thereby reducing the amount of printed mail being posted. This has led to considerable cost savings as well as moving QEI closer to its sustainability goals.



PEOPLE

To ensure all members of our community have access to proper eye care and education on eye health



PLANET

To preserve our environment by conserving energy and minimising non-recyclable waste



PROSPERITY

To maintain sustainable growth to allow us to support our team members, research and education programs



JUSTICE

To promote a safe environment for all patients and staff



DIGNITY

To restore sight, giving patients independence and confidence



PARTNERSHIPS

To encourage our research and corporate partners to develop and follow their own sustainable development goals

Our Purpose

The Queensland Eye Institute Foundation (QEIF) is Queensland's largest independent academic research institute devoted to eye-related health and diseases. QEIF works every day to save sight by providing innovation and excellence in research, education and clinical care to reduce eye diseases, improve eye health, and ultimately eliminate preventable blindness in the community.

Its state of the art facilities in South Brisbane and Clayfield include the QEI Clinics, South Bank

Day Hospital, Queensland Electro-Diagnostic and Imaging Centre (QEDIC), medical research and microsurgical teaching laboratories, medical library and the home of QEIF.

With no government funding, QEIF's survival relies solely on the generosity of donors, businesses and the community.



Report by Chairman and Executive Director

2022 has been a year of recovery and renewal. While continuing to provide clinical care under the strict limitations of COVID-19 public health mandates, our South Brisbane facilities were devastated by flooding in February.

Like many buildings in Brisbane, 140 Melbourne Street was affected by severe weather conditions occurring across southeast Queensland, with leaks on each of the floors and major flooding in the car parks. Lift shafts filled with water. We lost all hospital services located on Basement Level 1. Cordelia and Melbourne streets also flooded. Many staff were stranded in their homes and were unable to come into work. Like many businesses in the area, we had to close the institute and hospital.

The storm and flood had a significant impact on the operations and finances of Queensland Eye Institute and its associated entities. Current financial impact is estimated to exceed \$1.2 million.

The flood event spurred us to bring forward relocation plans. New premises at Woolloongabba have been secured for QEIF and Southbank Day Hospital which will be fitted out and ready for relocation when our current lease expires at the end of 2023.

During the second part of 2022, the impact of the COVID-19 Pandemic started to ease. While there were still times of heightened awareness and enforcement of pandemic measures, we saw a return to some degree of normality.

Mr. Mark Sheridan, Chair of QEIF, was awarded an Order of Australia Medal (OAM) in the Australia Day Honours List 2022 for his services to community health.

In 2022 the Foundation welcomed two new directors, Ms Jane Prentice and Professor Jeff Dunn. This was Jeff's second term as director of QEIF. Unfortunately, Prof. Dunn had to retire from the Board later in the year for personal reasons.

Professors Traian Chirila and Mark Radford, and Dr. Shuko Suzuki visited the George E. Palade University of Medicine, Pharmacy, Science and Technology (UMFST) of Târgu Mures in Romania to initiate the long planned collaboration between our two institutions.

QEI scientists commenced work with UMFST researchers on a series of projects examining the role of human tissue in novel therapeutic strategies for various pathologic conditions. As part of the UMFST agreement, QEI set up a laboratory, equipped with scientific instrumentation dedicated entirely to these projects. The cost for this set up has been met by UMFST.

Closer to home, QEI ophthalmologists Assoc Prof Abhishek Sharma and Dr David Gunn co-convened the Royal Australia and New Zealand College of Ophthalmology international meeting in Brisbane, the first in-person College conference since 2019. Brisbane hosted doctors from Australia, New Zealand, Pacific Islands, Southeast Asia and further afield to gather for spirited discussions for the best management of all eye conditions.

After the COVID-19 induced hiatus, clinical trials recommenced with an expanded team and new trials added to the program.

Our commitment to rural outreach continues. The Kingaroy Clinic, managed by the South Brisbane administration team, saw increased patient numbers, arising from a contract with the Darling Downs Health District.

We continue to advance a social initiative to rebuild and expand health facilities and services in Kingaroy and surrounding areas in partnership with a group of investors, the Cherbourg Aboriginal Community and the South Burnett Regional Council.

As always, we thank everyone who has supported us during the year, especially our donors. In particular, we would like to thank the Sylvia and Charles Viertel Charitable Foundation, its Trustees and its Chair, Justice Debra Mullins, for their continued support.

Mark Sheridan
CHAIRMAN



Professor Mark Radford
EXECUTIVE DIRECTOR & CEO



Impacts & Outcomes

Clinical Care

QEI provided clinical care to people from Queensland and Northern NSW at the following locations:

- South Brisbane Clinic
- Clayfield Clinic

The QEI clinic continued to see an increase in patient numbers and services throughout 2022, with extended optometry services and new treatments being offered. In particular, the cornea team pioneered CAIRS surgery at QEI, bringing a brand new treatment option to the 1 in 70 Australians affected by keratoconus. This has allowed Australians to access this new treatment, with patients now travelling from various states to have the procedure performed by the QEI team.

The devastating floods early in 2022 led to a 3 week closure of the South Brisbane clinic in February. Fortunately, we were able to see patients in our Clayfield rooms very quickly. While some QEI staff were personally affected by the floods, the team worked extremely hard to ensure all patients

were contacted and appointments co-ordinated so that clinics could resume within three days of the flood event.

COVID-19 continued to challenge us throughout the year. While Queensland Health guidelines and restrictions relaxed somewhat, staff shortages and patient cancellations continued to affect the clinic.

Sustainability initiatives continued to be a focus with particular emphasis on reducing paper use and printing. We shifted to electronic correspondence while maintaining strict privacy safeguards, thereby reducing the amount of printed mail being posted. This has led to considerable cost savings as well as moving QEI closer to its sustainability goals.

In 2022 we continued the move to electronic medical records. This involves scanning years' worth of records into our Patient Management System, a team effort involving many auditing steps to ensure accuracy and completeness. This project will continue as we look to having all records converted to electronic files before relocating the South Brisbane clinic.



Impacts & Outcomes (cont.)



**RESEARCH
PUBLICATIONS**
11



**RESEARCH
PROJECTS**
5

Research

QEI commenced work with a team of researchers at the George Emil Palade University of Medicine, Pharmacy, Science & Technology (UMFST) at Târgu Mures (Romania), investigating human tissue and its role in novel therapeutic strategies. QEI set up a laboratory at UMFST equipped with scientific instruments dedicated entirely to these projects, including:

- evaluation of our patented method for treating eyelid laxity with human donor tissue
- a proposed method to prevent aneurysm rupture by crosslinking of vessel wall collagen
- establishment and evaluation of an animal model for aneurysm
- a project on the mechanical reinforcement of tendons

These projects are based on the idea of ultraviolet induced crosslinking of connective tissues developed by QEI scientists.

QEI also entered a new partnership with Flinders University to create a world-first international registry for vitreoretinal lymphoma. Spearheaded by Professor Justine Smith and Dr. Alexandra Farrall, this is the first global research effort to bring the treatment success seen for other types of lymphoma to patients with eye lymphoma. Vitreoretinal (eye) lymphoma is difficult to diagnose and often progresses rapidly to involve the brain. Two-thirds of people diagnosed with eye

lymphoma die within five years. Collecting medical information will allow researchers to understand how this cancer affects vision and the outcomes of different types of treatment.

Results from experiments on the potential antioxidative effects of sericin, a protein isolated from silkworm cocoons, were finalised and published in the journal *Molecules*. This study, and its relevance for treating degenerative eye diseases such as age related macular degeneration, continued in collaboration with Bond University, where additional experiments were performed.

Work on the development of microparticle-nanoparticle systems for the on-command release of enzymes for controlling the effects of dermal fillers on the retinal blood circulation continued. New polymers were produced in the laboratory to enable a better encapsulation of the enzyme.



Impacts & Outcomes (cont.)



**CLINICAL TRIAL
PATIENTS**
466

Clinical Trials

QEI's clinical trials program expanded significantly in 2022, with a doubling of team members and a move to a new office with dedicated pharmacy and storage areas. This expansion was a response to growth in the number of trials and trial participants and is supported by new equipment (sponsor supplied and acquired) including an AdaptDX machine, temperature control cabinet, ECG machine, Reteval device and Shoebox audiometry device.

An average of 12 clinical trials per month focused on:

- Rhegmatogenous retinal detachment
- Diabetic macular oedema
- Dry eye/Meibomian gland dysfunction
- Stargardt Disease
- Wet/Neovascular age related macular degeneration
- Dry age related macular degeneration/ Geographic Atrophy
- Cataract/Intraocular lens
- New device for conducting Intraocular measurements – Axial length, topography, OCT



**EDUCATION
SESSIONS**
15

Education and training

QEI continued to offer education programs supporting staff, students, registrars, fellows and other eye care professionals to reach their full potential.

The education mix included five (5) optometry education evenings, seven (7) grand rounds and three (3) wetlabs.

In 2022 QEI collaborated with RANZCO to organise a Global Health Workshop on topics relevant to ophthalmologists in low resource settings (East Timor, Papua New Guinea, South Pacific). The event attracted more than 100 participants from countries in Asia, the South Pacific, Australia and New Zealand.



Collaborations

INTERNATIONAL

- G. E. Palade University of Medicine, Pharmacy, Science and Technology, Târgu Mures, Romania
- Aix-Marseille Université-Polytech Marseille
- National Agriculture & Food Research Organization, Tsukuba, Japan

NATIONAL

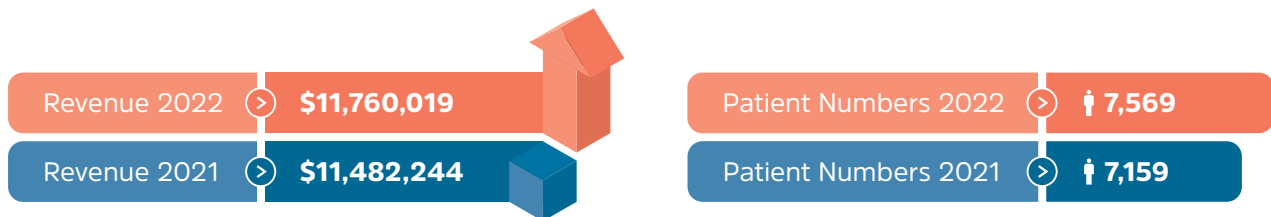
- Queensland University of Technology, Brisbane
- University of Queensland, Brisbane
- University of Sydney, Sydney
- University of Western Australia, Perth
- Lions Eye Institute, Perth
- Bond University, Gold Coast
- Flinders university, Adelaide



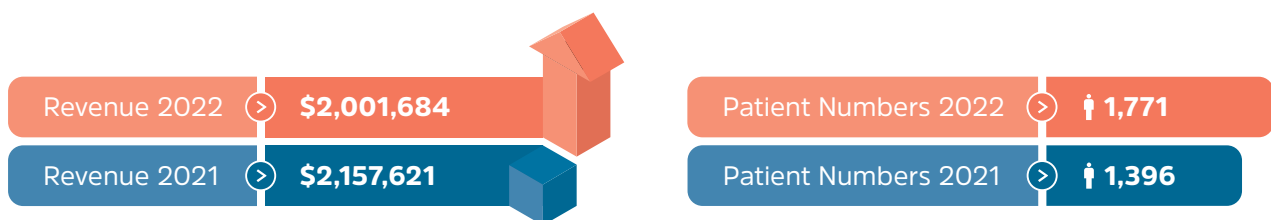
Sustainable Funding



The South Bank Day Hospital and Kingaroy-based Lady Bjelke-Petersen Community Hospital are both operated by the South Bank Medical Group. All profits generated by the hospitals are invested back into the work of the QEI Foundation. The devastating February flood caused the hospital to close for three weeks, resulting in less-than-projected growth in 2022.



The Kingaroy-based Lady Bjelke-Petersen Community Hospital is also operated by South Bank Medical Group and provides vital services in the South Burnett region of Queensland.



Financial Snapshot

Balance Sheet Comparatives

ASSETS	2022	2021
CURRENT ASSETS		
Cash and cash equivalents	2,578,458	2,984,115
Trade and other receivables	618,129	729,610
Other current assets	326,076	
TOTAL CURRENT ASSETS	3,522,663	3,713,725
NON-CURRENT ASSETS		
Trade and other receivables	1,628,361	273,263
Investments in subsidiaries	30,137	30,137
Financial assets	5,265,820	5,391,393
Property, plant and equipment	5,772,969	6,517,631
Intangible assets	77,529	62,404
Right-of-use assets	3,546,871	14,773,148
TOTAL NON-CURRENT ASSETS	16,321,687	27,047,976
TOTAL ASSETS	19,844,350	30,761,701
LIABILITIES		
Trade and other payables	437,669	187,188
Employee benefits	953,429	862,047
Other financial liabilities	12,014,287	21,745,305
TOTAL LIABILITES	13,405,385	22,794,540
NET ASSETS	6,438,965	7,967,161

Financial Snapshot (cont.)

Income Statement Comparatives

	2022	2021
REVENUE		
Sylvia & Charles Viertel Charitable Foundation	1,872,540	1,854,000
Bequests and other donations	342,586	702,683
Clinical cost recoveries	3,451,205	3,330,682
Investment income	-910	776,007
JobKeeper and Government support	50,000	306,800
Other income	160,982	182,132
TOTAL INCOME	5,876,403	7,152,304
EXPENSES		
Occupancy costs	787,254	843,239
Research costs	1,060,547	1,306,027
Fundraising costs	158,472	286,931
Clinical costs	4,463,300	4,253,764
Administration costs	935,029	1,798,381
TOTAL EXPENSES	7,404,602	8,488,342
NET COMPREHENSIVE INCOME / (LOSS)	(1,528,199)	(1,336,038)

Why research matters

Elaine Young is a bright 74-year-old whose busy retirement was cut short in 2021 by age related wet macular degeneration and advanced cataracts. Elaine had been managing her disease, but a catastrophic bleed behind her 'good' eye made her legally blind.

Elaine says she gave herself three days to be upset, crying on a friend's shoulder as she imagined a future without sight. "I burst into tears and said, 'I don't want to go blind'".

Elaine couldn't drive anymore. She struggled with everyday tasks like making a cup of tea and cooking toast. She stopped using her gas stove, instead ordering ready-made meals she could heat in the microwave.

Elaine recalls an aunt with the same disease, whose eventual blindness forced her into an aged care home. "She was a very bright woman," Elaine says. "She was an ex-army nurse who'd always loved to read, but she simply couldn't care for herself anymore."

Today, intraocular drug therapies (injections) have transformed how age-related macular degeneration is managed. Patients with glaucoma and dry eye disease have new drug and surgical options that weren't available to earlier generations. These advances give patients like Elaine hope.

After a year of grappling with lost sight, Elaine had cataract surgery which restored vision to one eye. She's making the most of her newfound sight, travelling to Europe to cruise the Danube with friends. "I'm still having injections in my good eye, but a bleed could happen any time, so I'm making hay while the sun shines," she says.

Elaine is grateful for treatment advances and hopes ongoing research will mean her children and grandchildren can look forward to a future without vision loss.



*I burst into tears
and said, 'I don't
want to go blind'*

Board of Directors



Mark Sheridan OAM **CHAIRMAN**

Mark Sheridan is a Partner with leading business advisory

firm Mazars in Brisbane. He has a Bachelor of Commerce (Honours) and is a Fellow of Chartered Accountants Australia and New Zealand. He is also a Fellow of the Institute of Managers and Leaders and a member of the Australian Institute of Company Directors.

He was appointed a Director of the Prevent Blindness Foundation in 2003 and Chairman of the Foundation from April 2011.



Jemma Elder **DIRECTOR**

Jemma is an accomplished Managing Director with a strong

track record of performance in Australia and New Zealand. She was previously with Publicis, one of the world's largest media and communications agency networks, where her remit spanned leadership of Personalised Plates Queensland, KiwiPlates and Qantas Corporate Sales.

Jemma brings extensive business, technology, sales and marketing experience having previously worked in senior positions with ASX listed companies.



Mark Radford **EXECUTIVE DIRECTOR**

Prof. Mark Radford has been Executive Director and Chief

Executive Officer for the Queensland Eye Institute since March 2010. Mark completed his first undergraduate degree at Flinders University of South Australia in 1978. After being awarded a Japanese Government (Mombusho) Fellowship, Mark completed his Doctor of Medicine at Nagasaki University School of Medicine in 1992 and a PhD at Flinders University (1989).

In 2006, Mark returned to Australia to become CEO and Managing Director of Symbiosis Group Limited – a life science investment, management and commercialisation company based in Brisbane, Australia.



Kelly Langdon **COMPANY SECRETARY**

Kelly Langdon has been associated with the Queensland Eye Institute

since 2004 in a General Management consulting capacity. Kelly's qualifications included a Bachelor of Human Resource Management and Economics.

Kelly enjoys the variety and scope of working with the Queensland Eye Institute; it provides the opportunity to bring commercial business to the not for profit sector.

Board of Directors (cont.)



Mario Pennisi AM
DIRECTOR

Mario is a strategic advisor and consultant with more than

30 years' experience in managing and growing commercial operations in the life sciences industry. He was a government-appointed Member of the Queensland University of Technology (QUT) Council, and associated committees, including as Chair of the IHBI External Engagement Committee.

He is also the Chair of Griffith University's Clinical Trials Advisory Committee and a Member of the Queensland Government's Biofutures Industry Advisory Group.



John Lowes
DIRECTOR

John is a retired special counsel and previously a partner with

Shand Taylor Lawyers. Prior to that he was the principal of Lowes & Company, a predominantly property and commercial law firm which he headed for 11 years, following eight years with the international law firm Phillips Fox (now DLA Piper).

John's law practice concentrated on all aspects of property, business law and private client advisory.

He has also acted for a broad range of health professionals and specialist medical groups.



Professor Jeff Dunn AO
DIRECTOR

Jeff's work in cancer control spans 30 years, during which

he dedicated himself to the development of strategies addressing cancer survival and improved awareness of the disease, with a special focus on the social and behavioural aspects of cancer.

He has over 200 publications, including peer reviewed manuscripts, chapters, books and reports.

In 2014 Jeff was appointed an Officer in the Order of Australia for distinguished service to medical administration through leadership of cancer control organisations and promotion of innovative and integrated cancer care programmes.

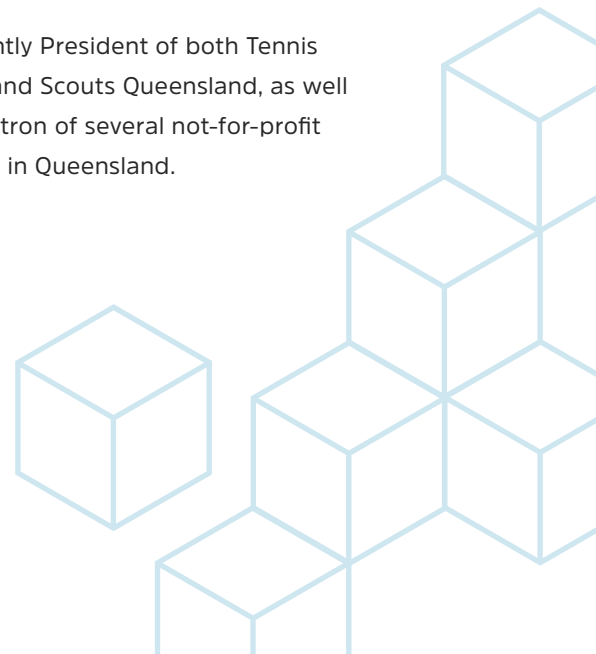


Jane Prentice
DIRECTOR

Jane Prentice is a former Australian politician who served

as a member of the House of Representatives from 2010 to 2019, representing the Division of Ryan in Queensland. She previously served on the Brisbane City Council from 2000 to 2010.

Jane is currently President of both Tennis Queensland and Scouts Queensland, as well as being a Patron of several not-for-profit organisations in Queensland.



Research Advisory Committee



Prof Mark Radford

Mark has been Executive Director and CEO of QEIF since 2010. He has a Doctor of Medicine from Nagasaki University, Japan and a PhD from Flinders University of South Australia.

Mark is a Fellow of Australian Institute of Company Directors, the Institute of Managers and Leaders, and the Queensland Academy of Arts & Sciences, and an Honorary Fellow of the Royal Australian and New Zealand College of Ophthalmologists.

Mario Pennisi AM

Mario is a strategic advisor and consultant with more than 30 years' experience in managing and growing commercial operations in the life sciences industry. He is a government-appointed Member of the Queensland University of Technology (QUT) Council, and associated committees, including as Chair of the IHBI External Engagement Committee.

He is also the Chair of Griffith University's Clinical Trials Advisory Committee and a Member of the Queensland Government's Biofutures Industry Advisory Group.

Prof Helen Chenery


Professor Chenery is former Executive Dean of the Faculty of Health Sciences and Medicine at Bond University.

In previous academic roles - as Director of a translational clinical research centre in neuromodulation and Deputy Executive Dean (Academic), Faculty of Health Sciences at The University of Queensland - she has led policy and practice reform in dementia care, health workforce and service design, and interprofessional education/practice.

Prof Peter McCluskey AO

Professor Peter McCluskey is Director of the Save Sight Institute at Sydney Eye Hospital and Professor and Chair of Ophthalmology at the University of Sydney.

Peter is an inflammatory eye disease specialist with more than 25 years' experience in the field. He has received distinguished service awards from APAO, RANZCO and AAO for his teaching contributions.



Our 2022 Team

Board of Directors

Mark Sheridan
CHAIRMAN OAM

Prof Mark Radford
EXECUTIVE DIRECTOR

Jemma Elder
DIRECTOR

John Lowes
DIRECTOR

Mario Pennisi
DIRECTOR AM

Prof Jeff Dunn
DIRECTOR AO

Jane Prentice
DIRECTOR

Kelly Langdon
COMPANY SECRETARY

Management Team

Kelly Langdon
CHIEF OPERATING OFFICER

Anna Blake
CLINICAL SERVICES MANAGER

Jane Dodds
COMMUNITY RELATIONS MANAGER

Carmel Johnston
EA TO THE EXECUTIVE DIRECTOR & CEO

Wayne Thompson
FUND RAISING & EVENTS MANAGER
until 13/1/22

Research Advisory Committee

Prof Mark Radford

Mario Pennisi AM

Prof Helen Chenery

Prof Peter McCluskey AO

Clinical Faculty

Dr Brendan Cronin
CORNEA AND ANTERIOR SEGMENT

Dr David Gunn
CORNEA, CATARACT & REFRACTIVE SURGERY

Dr Elias Kehdi
PAEDIATRICS

Associate Prof Anthony Kwan
RETINAL DISEASES

Dr Anthony Pane
NEURO-OPHTHALMOLOGY

Dr Geoffrey Ryan
CATARACT, GLAUCOMA AND CORNEA

Dr Abhishek Sharma
MEDICAL & SURGICAL RETINAL DISEASES

Research Faculty

Prof Traian Chirila
CHIEF SCIENTIST

Prof Lawrence Hirst
SENIOR CLINICAL SCIENTIST

Dr Shuko Suzuki
SENIOR RESEARCH OFFICER

Dr Alexandra Manta
CLINICAL RESEARCHER

Dr Onur Sakiragaoglu
RESEARCH ASSISTANT

Prof Damien Harkin
VISITING SENIOR SCIENTIST

Dr Audra Shadforth
VISITING SCIENTIST

Honorary Research Faculty

Prof Murray Baker
UNIVERSITY OF WESTERN AUSTRALIA

Associate Prof Nigel Barnett
BOND UNIVERSITY

Associate Prof Idriss Blakey
THE UNIVERSITY OF QUEENSLAND

Dr Tim Dargaville
QUEENSLAND UNIVERSITY OF TECHNOLOGY

Dr Beatrix Feigl
INSTITUTE OF HEALTH & BIOMEDICAL INNOVATION (IHBI)

Prof Justine Smith
FLINDERS UNIVERSITY

Assoc Prof Shuan Dai
VISITING CLINICAL RESEARCHER

Dr Jaclyn White
VISITING CLINICAL RESEARCHER

Prof Timothy Sullivan
SENIOR CLINICAL SCIENTIST

Dr Lauren Gomes
RESEARCH ASSISTANT



Support QEIF

Donate

Our research program receives no government funding and relies on charitable donations and grants. For as little as \$5 a week you can help strengthen our financial position, allowing us to continue our sight saving research.

Visit qei.org.au/qei-foundation/donate/

Leave a bequest

To make a gift in your will, contact Jane Dodds, Community Relations Manager on Jane.Dodds@qei.org.au or +61 7 3239 5050

Join a clinical trial

Be part of clinical research by registering at qei.org.au/clinical-trials/

Follow our journey



QueenslandEyeInstitute



queensland-eye-institute-qei



@queenslandeyeinstitute





Year in Review 2022

140 Melbourne St,
South Brisbane QLD 4101

07 3239 5050
info@qei.org.au
QEI.ORG.AU

